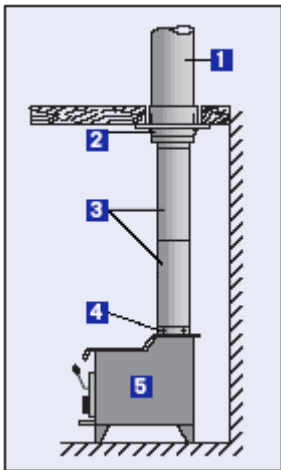
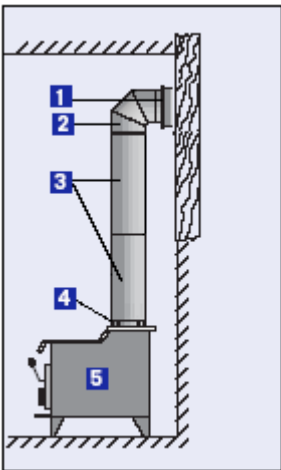


## Installation



### Straight Installation

- 1 – Insulated Chimney
- 2 – Finishing Cone
- 3 – Adjustable 38" to 69 1/2" Pipe Length or Black Pipe Length
- 4 – Optional Stove Adaptor (P\*SA)
- 5 – Stove



### Through-the-wall Installation

- 1 – Finishing Cone
- 2 – Elbow
- 3 – Adjustable 38" to 69 1/2" Pipe Length or Black Pipe Length
- 4 – Optional Stove Adaptor (P\*SA)
- 5 – Stove

**Poor Boy is a manufacturer of high quality Black Stove Pipe Products. It is designed to be used when your family's safety is your top priority. Every piece of Poor Boy's Black Stove Pipe is constructed using the industries top quality control assessments.**

- ❑ 24 gauge .0276 Satin Coat Metal
- ❑ Spot welded
- ❑ Beaded for furnace cement
- ❑ Every piece is punched for sheet metal screws
- ❑ 3 sheet metal screws are supplied with every piece
- ❑ Painted with black high-temperature low luster finish
- ❑ Individually wrapped and packaged for shipment
- ❑ For interior use only
- ❑ Designed for the smaller crimped end to be installed toward the heating unit.

**Poor Boy**  
9316 – 44 St. S.E.  
Calgary Alberta, T2C 2N4  
Tel.: (403) 279-5115

**Available From**



MANUFACTURERS OF  
QUALITY STOVEPIPE PRODUCTS

Poor Boy Pipe is the finest, roundest, and safest stove pipe available for home or commercial units. It is recommended when absolute safety is demanded.

Poor Boy Pipe is constructed from 24 gauge Satin Coat Metal which makes it just about the thickest stove pipe you can buy. It is further strengthened with spot welded seams which hold together in case of overheating. The welded seams make snapping the pipe together unnecessary and assure its roundness for ease of installation.

Hundreds of dollars are spent on stoves or furnaces. Then they are placed beneath inadequate and unsafe stovepipe. The difference in cost is but a small price to pay for the added peace of mind.



*\*Clearance to combustibles is 18". Can be reduced with the use of a heat shield to 9"*

## Quality Product

- ❑ Lengths: 12", 24", 36", 38" to 69 ½" Slip Pipe
- ❑ Diameters: 6", 7", 8"
- ❑ Elbows: 45° and 90° in all diameters (solid and adjustable)
- ❑ Tees
- ❑ Covers: for bottom of tees (for cleaning pipe)
- ❑ Slip connector: for irregular lengths
- ❑ Pipe collar: Both ends plain and both ends crimped
- ❑ Masonry caps
- ❑ Wall collars
- ❑ Deep finish cones
- ❑ Full line of increasers and reducers in tapered and zero
- ❑ Chimney thimbles
- ❑ Stove pipe deflectors

*It is important that coal or wood burning units and the pipe and fittings be installed to conform to local codes*



Black Slip Adaptor Flue Extension  
**P\*SP**  
Use slip adaptor to make any piece of insulated pipe adjustable. Simply slip the piece into any regular length of insulated pipe and make it adjustable. And converted to Black smoke pipe.



Black Slip Adaptor  
**P\*S**  
Use slip adaptor to make any piece of pipe adjustable. Simply slip the piece over any regular length of black smoke pipe and make it adjustable.



38" to 69 ½" Adjustable Black Smoke Pipe  
**P\*3X6**  
Use to complete any application requiring 38" to 69 ½" of pipe length.

## General Parts – Available in 6", 7" and 8" ID

(replace \* with pipe diameter)



Black Smoke Pipe  
**P\*12,P\*24,P\*36,P\*48**  
Four Lengths are available:  
12", 24" 36", 48"  
Use the desired length of black smoke pipe.



Stove Pipe Deflector 36" (Heat Shield)  
**PSD**  
Use the stove pipe deflector to reduce the clearance to combustibles to 9" from 18".  
\*\* Also available in an 18" version (PSD18)



Black Adjustable Elbows  
**P\*45, P\*90**  
45° Degree and 90° Degree Elbows are used when an offset is required and are adjustable.



Black Tee  
**P\*T**  
A Tee can be installed between the chimney and the stove. Available with black cap (P\*C) and black plug(P\*P) options.



Finishing Cones  
**P\*FC**  
Conceals the joint between the single wall pipe and the insulated chimney. (Available in 6", 7", 8", 9" and 10")



Stove Adaptor  
**P\*SA**  
Used to adapt from stove O.D. to the proper stove pipe I.D.



Tapped Increasers (Crimped to Pin)  
**P\*I\***  
Required for adapting the single wall black pipe to a larger flue diameter.  
Available in 5"-6", 6"-7", 6"-8", 7"-8", 8"-9", 8"-10" and 9"-10"



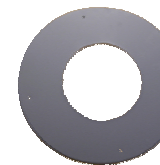
Zero Increasers (Crimped to Pin)  
**PZ\*I\***  
Required for adapting the single wall black pipe to a larger flue diameter.  
Available in 5"-6", 6"-7", 6"-8", 7"-8", 8"-9", 8"-10" and 9"-10"



Tapped Reducers (Crimped to Pin)  
**P\*R\***  
Required for adapting the single wall black pipe to a smaller flue diameter.  
Available in 7"-6", 8"-6", 8"-7", 9"-8" and 10"-8"



Zero Reducers (Crimped to Pin)  
**PZ\*R\***  
Required for adapting the single wall black pipe to a smaller flue diameter.  
Available in 7"-6", 8"-6", 8"-7", 9"-8" and 10"-8"



Trim Collar  
**PTC\***  
Covers the joint between the single-wall and the insulated chimney