



No Utility Bills Inc.

www.noutilitybills.com

Tel: (780)628-4835

#301 Lyall Subdivision, County of Athabasca, AB, Canada

VIEWINGS BY APPOINTMENT ONLY!

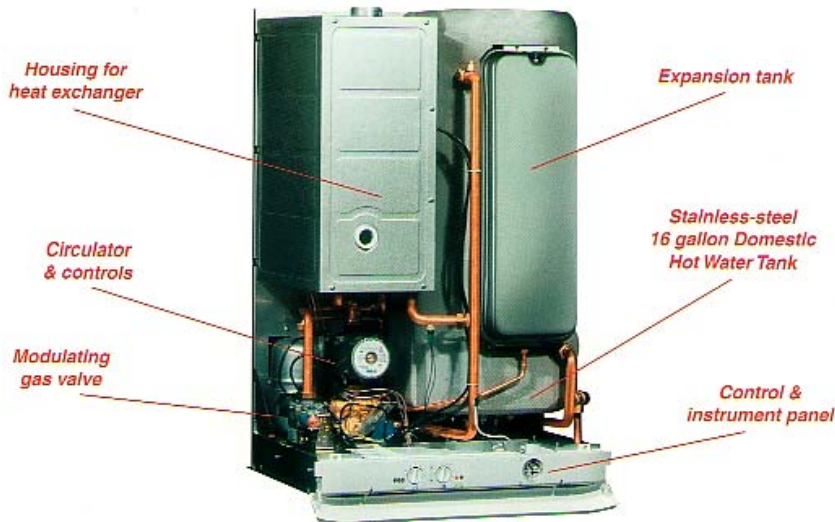


Biasi Riva 84.7% EFI Boilers

The Biasi Riva boilers are factory shipped with all primary system components installed and contained within the boiler, making installation of these units fast and simple. All Riva boilers are ASME and CSA certified to ensure the utmost safety and quality.

Model	Riva Compact	Riva Combi
List Price		
Sale Price		
Fuel	Natural Gas or Propane	
Btu Input	49,500 - 122,800	
Btu Output	37,000 - 101,000	
Flue Size	3" Biasi Riva Vent	
Weight	86 lbs	165 lbs
Depth	13"	18"
Height	28"	36"
Width	16"	24"
DHW	N/A	Internal 16 Gallon
DHW Flow	N/A	3.3 gpm @ 65deg rise

RIVA Combi Boiler



Easy to Install and Maintain

Within the white enameled casing of the RIVA are a perfectly matched piped and wired set of components including expansion tank, circulator, vents, valves and controls which operate in complete silence. Minimal exposed external boiler piping or boiler components are required to install the boiler. And since the RIVA is wall mounted, access to major components is at chest level for ease of installation and service.

Safety Features

- Frost protection system
- Self diagnostic control system
- Safety flow switch to prevent thermal shock in the event of low or no water in the heating system
 - Internal high limit temperature control
 - Blocked flue safety pressure switch
- Circulator protection if boiler is idle for 24 hours
- Warranty: 2 years complete,
- 10 years Heat Exchanger

Technical Advantages

- ASME certified heat exchanger
 - CSA certified
- Natural gas or Propane compatible
- Gas valve modulation in both central heating and domestic hot water modes
 - All parts internalized
 - Electronic spark ignition
 - Direct Vent or Roof Vent
- separate or concentric systems available
- Wall-Mounted



No Utility Bills Inc.

www.noutilitybills.com

Tel: (780)628-4835

#301 Lyall Subdivision, County of Athabasca, AB, Canada
VIEWINGS BY APPOINTMENT ONLY!

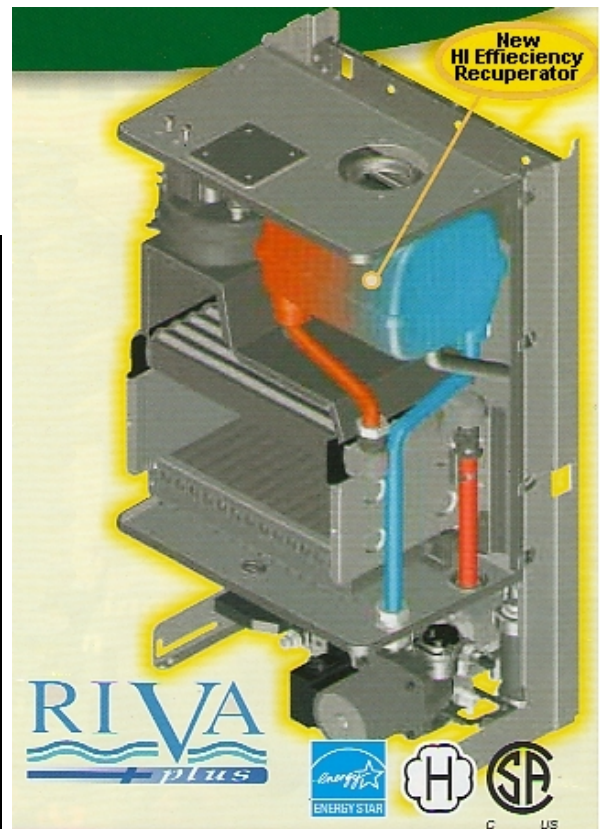


Biasi Riva Plus 92% EFI Boilers

Easy to Install and Maintain

Within the white enameled casing of the RIVA are a perfectly matched piped and wired set of components including expansion tank, circulator, vents, valves and controls which operate in complete silence. Minimal exposed external boiler piping or boiler components are required to install the boiler. And since the RIVA is wall mounted, access to major components is at chest level for ease of in-

The Biasi Riva boilers are factory shipped with all primary system components installed and contained within the boiler, making installation of these units fast and simple. All Riva boilers are ASME and CSA certified to ensure the utmost safety and quality.



Model	Riva Plus Compact	Riva Plus Combi
List Price		
Sale Price		
Fuel	Natural Gas or Propane	
Btu Input	49,000 - 116,000	
Btu Output	45,000 - 106,700	
Flue Size	3" Biasi Riva Plus Vent	
Weight	96 lbs	110 lbs
Depth	13.8"	
Height	31.6"	
Width	15.8"	
DHW	N/A	Plate Exchanger
DHW Flow	N/A	2.75 gpm @ 70deg rise

Safety Features

- Frost protection system
- Self diagnostic control system
- Safety flow switch to prevent thermal shock in the event of low or no water in the heating system
 - Internal high limit temperature control
 - Blocked flue safety pressure switch
- Circulator protection if boiler is idle for 24 hours
 - Condensate trap with safety lock out
- Warranty: 2 years complete,
- 10 years Heat Exchanger

Technical Advantages

- Stainless steel recuperator
- ASME certified heat exchanger
 - CSA certified
- Natural gas or Propane compatible
- Gas valve modulation in both central heating and domestic hot water modes
 - All parts internalized
 - Electronic spark ignition
 - Direct Vent or Roof Vent
- separate or concentric systems available
- Wall-Mounted