

No Utility Bills Inc.

www.noutilitybills.com

Tel: (780)675-3409 / (780)628-4835

#301 Lyall Subdivision, County of Athabasca, AB, Canada

VIEWINGS BY APPOINTMENT ONLY!

List Price From	
Sale Price From	
Prices are subject to change without notice! 071908	

The Selkirk MAX! Bordeaux EPA Wood Fireplace

Optional Internal Fan System to increase warm air circulation

Solid Cast Face Plate and Doors resist warping and maintain a tight seal in-order to maintain high-efficiency

Extra Large Viewing Area, up to 22" x 14" (Single Doors)

Single or Double Door Designs with easy to operate handles

Large capacity integrated Ash Pan Drawer with carrying handle



Attractive framed Black Louvers allow generous air flow into your room

Black, 24K Gold or Nickel Door Finishes

Heat Radiating High Temperature Ceramic Glass

Stainless Steel Log Retainer

EZ Adjust Combustion Air Control allows for regulation of burn rate



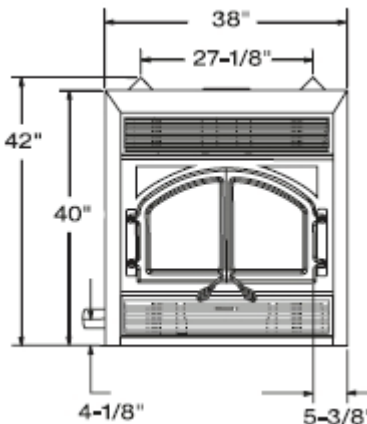
Double Nickel Doors



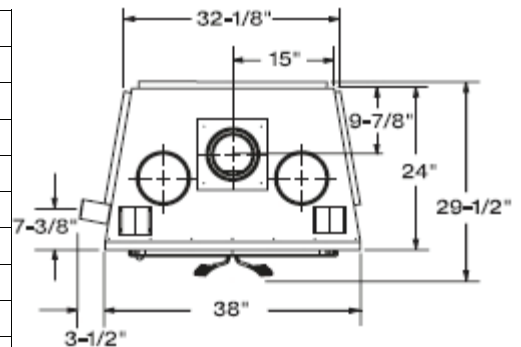
Double Black Doors



Single Black Door



Fuel	Wood
Btu EPA / Cord Wood	45,500 / N/A
Heating Capacity	Up To 2,000 sq.ft.
Burn Time *	6 to 10 hours
Firebox Volume	Large 3.0 cu.ft.
Log Length	22 inches
Weight	405 lbs
Width	38 inches
Depth	24 inches
Height	42 inches
Flue Size	6 or 7 inches
Outside Air Size	3 inches
EPA Emissions	5.7 Grams per hour
Hearth Requirements	N.C. 18"D x 48"W
Central Heat Certified	CSA B366.1
Testing	ULC-S610 & UL-127



** Zero Clearance Installation **
(Reference Data - Installation as per the "Installation Manual")



Burn Time * may vary depending on the heat loss of the home and the quality of wood burned.



No Utility Bills Inc.



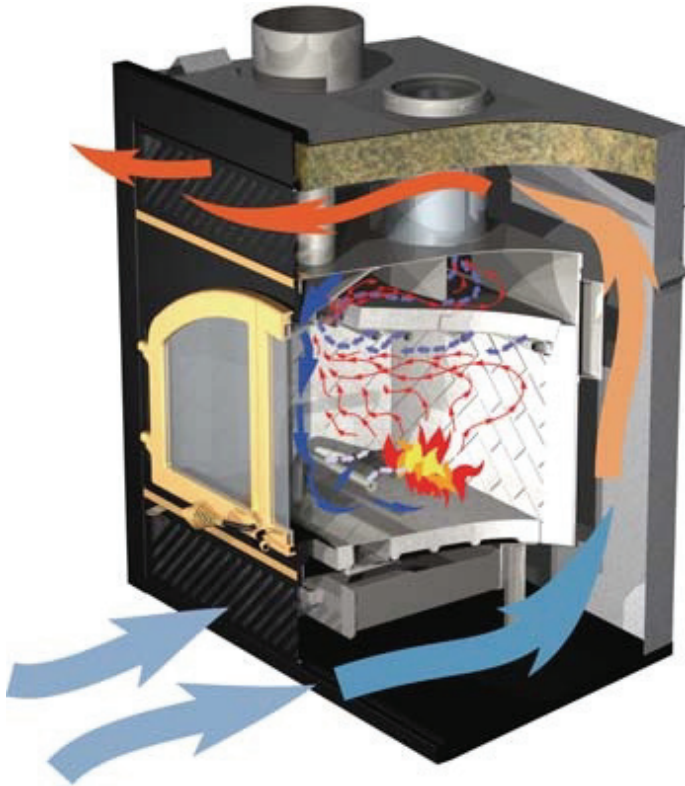
www.noutilitybills.com

Tel: (780)675-3409 / (780)628-4835

#301 Lyall Subdivision, County of Athabasca, AB, Canada

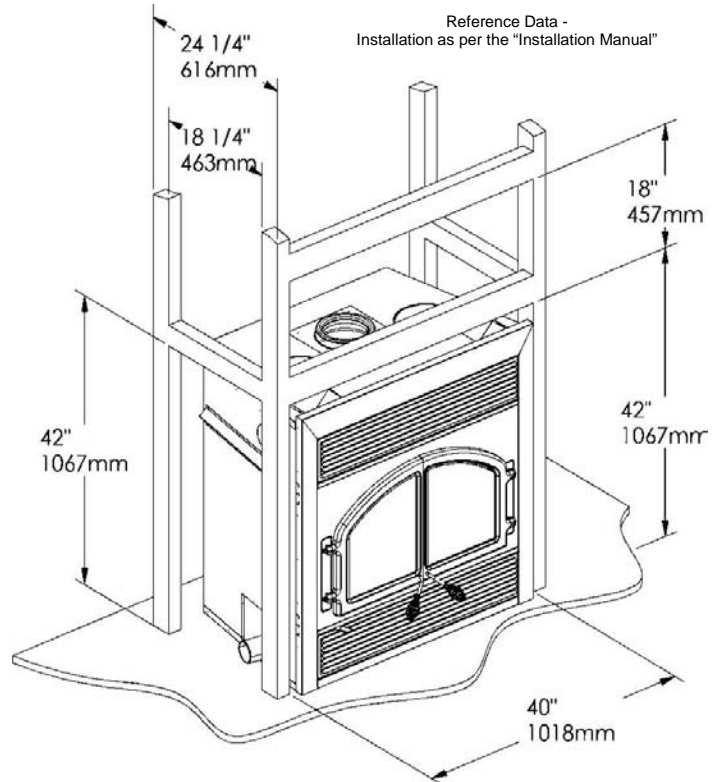
VIEWINGS BY APPOINTMENT ONLY!

Selkirk MAX! Bordeaux EPA Wood Fireplace



Central Heating

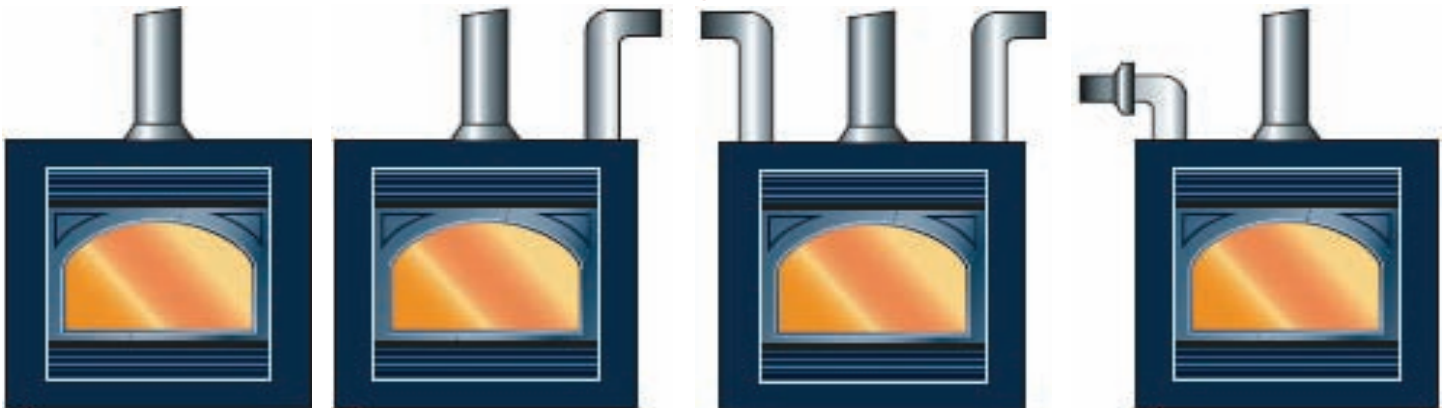
The Bordeaux can be used as a furnace to centrally heat your home. The ducting must be independent from all other appliances. Refer to installation instructions for additional details.



Zone Heating

Ducting can be installed for up to three separate zones in your home and each zone can be controlled individually using our zone heating control and zone dampers.

Ducting Options



Front Louver Venting

Gravity Vent Kit

Two Gravity Vent Kits

Central Heating 544 cfm Kit
Or Forced Air 430 cfm Kit

Optional 150 cfm Fan Kit Can be used in conjunction with front louver or gravity vent kits

Gravity vent kits may be ducted into adjoining rooms * Some Conditions - As Per Installation Manual*